



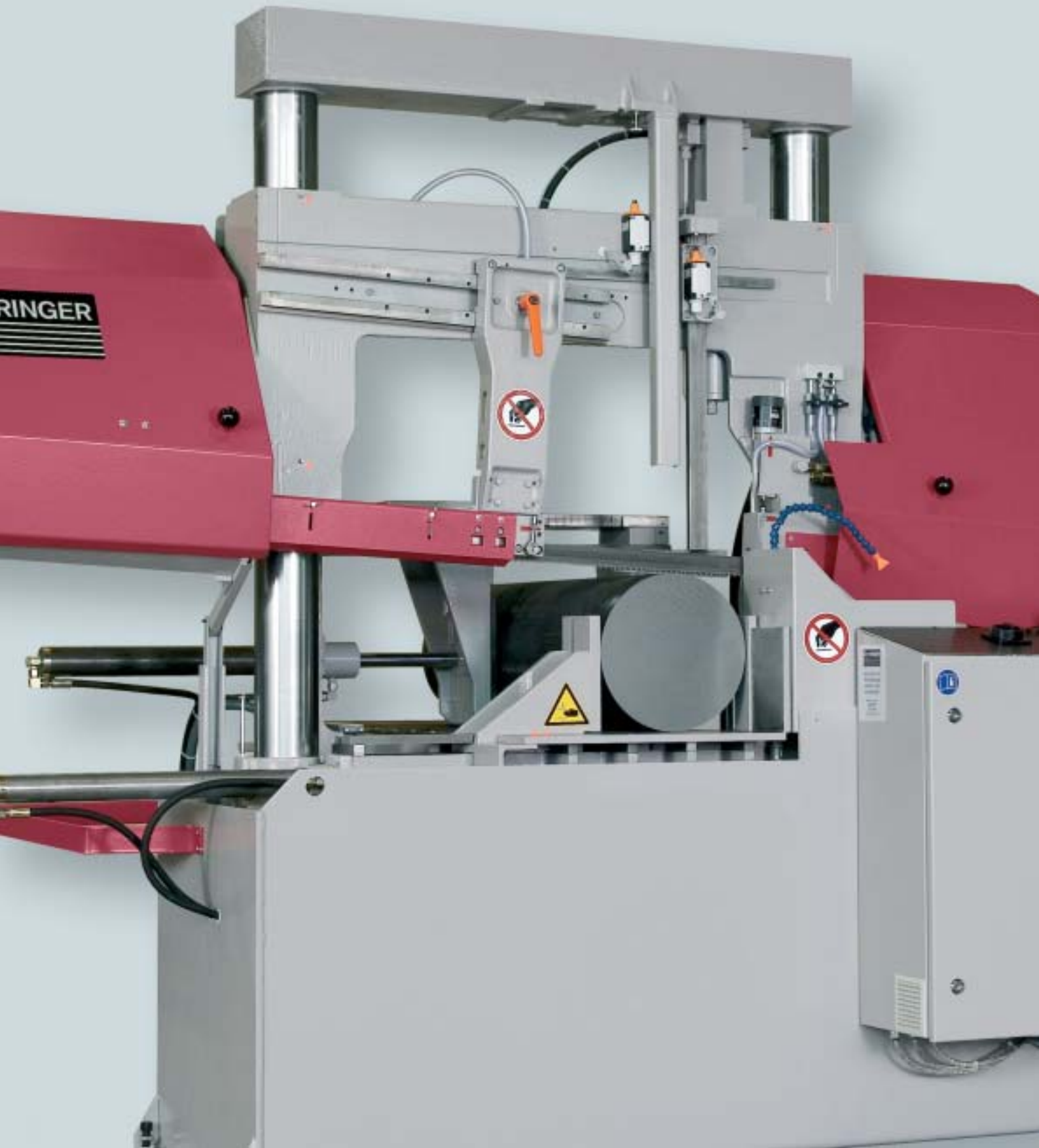
BEHRINGER

No-compromise engineering excellence:

Linear cut
BEHRINGER high-performance
and automatic bandsaws



Top quality to address stringent



t requirements: BEHRINGER

BEHRINGER HPB 413A

Two series to cover all disciplines

Stainless steel and tool steel. Tempered steel, special alloys and aluminium. In different thicknesses, shapes and diameters. Singly, in bundles or fixed lengths. Whatever you aim to saw, our HBP and HBM high-performance and automatic bandsaw series offer the solution you are looking for. In every cutting range. Despite their outstanding performance, our machines are all designed to offer maximum operating simplicity and space savings. And like everything from BEHRINGER, they are unbeatable in terms of speed, precision and quality.

A competitive edge as standard

BEHRINGER saws are designed to make short work of the most ambitious sawing assignments. You save not only time but hard cash too as a result of

- Minimal machine set-up and downtimes
- Ultra-modern drive engineering
- Precision cutting lengths and angles
- Minimal tooling costs
- High cutting outputs
- Short remnant lengths
- Durable cast design
- Extreme operating and maintenance simplicity

Waste disposal down to the last chip

All our machines feature a practical, application-oriented machine base design and extremely high cutting performance. Efficient chip disposal

using electrically powered saw tooth gullet brushes and a high-performance chip conveyor. Reliably down to the very last chip. For optimum cleanliness.

Quality from a single mould

One of the unique trademarks of a true BEHRINGER machine is the torsion-resistant, low-wear design of the machine and the saw frame. Because we are the only manufacturer in the world to use our own cast iron for all blade-guiding components.

This degree of stability is our guarantee of maximum cutting precision. And it also multiplies the service life of your machine.



Acclaimed the world over

BEHRINGER products comply with the most stringent requirements. Naturally we are certified to DIN EN ISO 9001.

No-compromise quality

BEHRINGER – world leader

Anything to saw? Then you have come to the very best address with BEHRINGER. We offer the world's biggest range of high-performance band and circular saws for the steel and metalworking industry. Machines, automatic systems and peripheral equipment. For every conceivable requirement. And every budget. High-performance, indestructible and outstanding quality products which embody the expertise and knowledge gathered by our specialists over more than 85 years. Ensuring maximum precision and economy for our customers.

Innovation all along the line

We provide a vital and unique impetus to your everyday sawing operations: Our outstanding vertical depth of production and innovative drive form a solid foundation for the development of top-class overall concepts and complete, perfectly coordinated system solutions. Precisely in line with your needs. For the most efficient process sequences imaginable.

Sound advice – optimum support

We are proud to present a range of sawing machines, products and services which is second to none. Our aim is to ensure all-round satisfaction for all our customers. Which is why we provide an individual and comprehensive advisory service, and assume complete project management responsibility. We are also right behind you with a range of interesting and reliable services designed for your convenience. Whatever it is you are planning – we are at your service.



The automatic bandsaw ra

HBP series: Versatile perfection

All the models of the HPB series are true all-rounders tubes, profiles, and solids. Both for automatic series cutting assignments and for one-off cuts. Easy to operate, flexible in use, economical and, primarily, extremely fast. All in all: Perfection – and at a surprisingly affordable price.

Profitable from the base up

The important functions – technical details which make your production even more profitable – are contained in the basic price:

- Fully automatic height setting of the saw frame
- Hydraulic saw blade tensioning with electrical monitoring
- Hydraulic material clamping
- Steplessly adjustable material gripper clamping pressure
- Ball screw for precise material positioning
- Electronically controlled cutting speed
- Steplessly adjustable saw feed

Practical add-ons for greater efficiency

The machines of this series are not only available in a wide range of available equipment variants, they can also be tailored to your very own specific requirements:

- Automatic guide arm adjustment
- Electrically powered chip conveyor
- Blade deflection monitoring system
- Programmable feed and cutting rates (AFC)
- Spray mist cooling system
- And many more additional features



ange for versatile application



BEHRINGER HBP 263A



Package clamping unit



Dual wheel bearings for reliable saw blade running even under maximum loads



The electronically controlled feed gripper quickly and precisely positions the material for cutting

Semi-automatic bandsaw

HBP series:

Precision for individualists

These are machines which should not be missing from any workshop. Any producer with different sawing jobs to perform will achieve perfect and primarily also cost-effective results with these semi-automatic bandsaws. These models are the optimum solution for economical processing of low piece numbers and one-off cuts. Added benefits: Optimum accessibility ensures extreme handling simplicity directly at the machines. And these models also lend themselves ideally to integration into existing sawing lines.

All in – right from the start

A BEHRINGER machine is a clear-cut, dependable investment every time – because all the important components are part of the standard equipment, for instance:

- Frequency controlled saw drive
- Backlash-free pre-tensioned saw blade guides
- Hydraulic blade tensioning
- Hydraulic material clamping
- Steplessly adjustable clamping pressure
- Double clamping vice (optional in some cases)

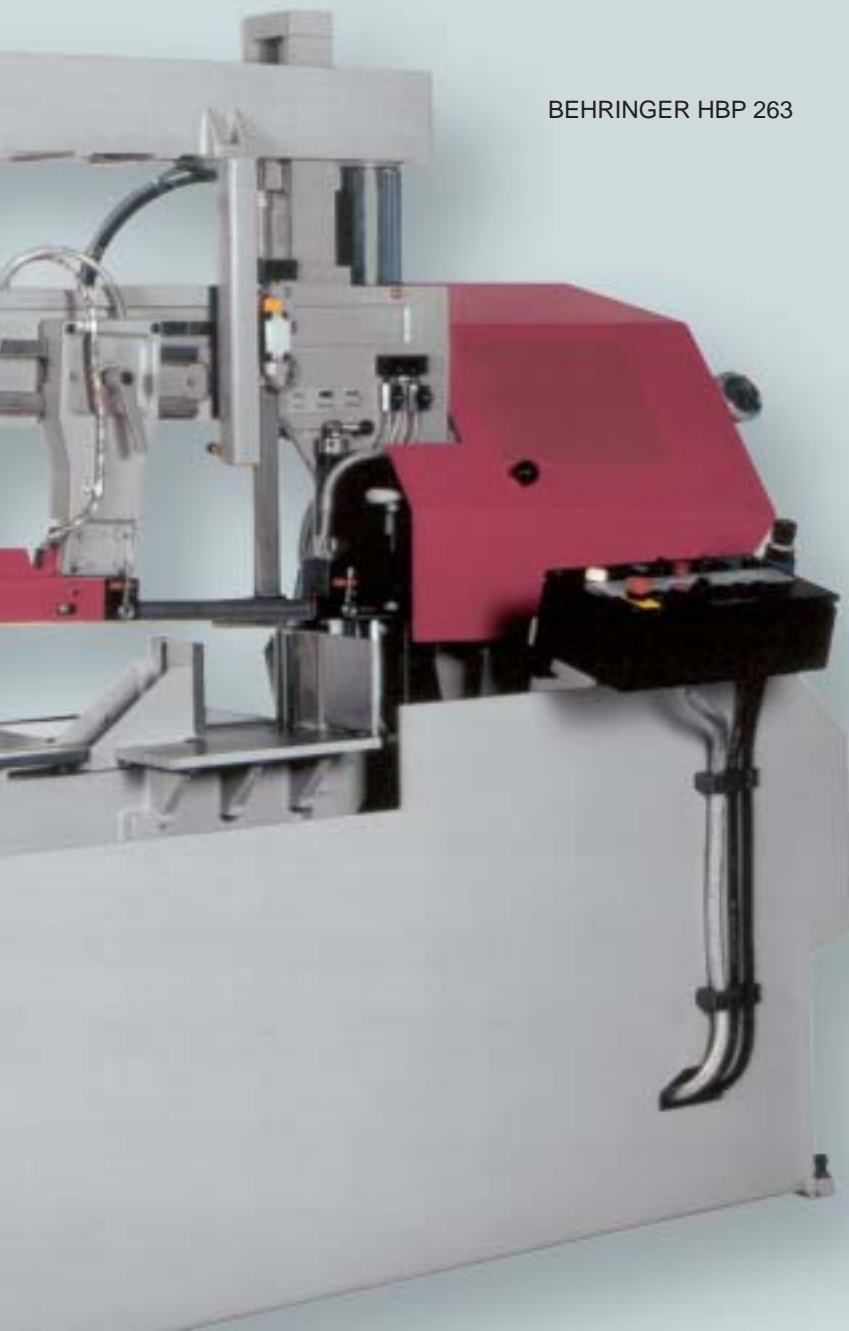
Interesting equipment options:

The semi-automatic machine range offers scope for individual retrofitting – with a range of optional extras for further enhanced convenience and economy:

- Spray mist cooling system
- Hydraulic vertical clamping unit
- Band slip monitoring
- Linear laser
- And much more



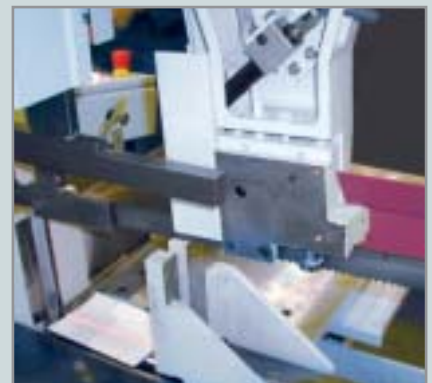
s for individual cuts



BEHRINGER HBP 263



Combined saw blade roller and carbide guides



Linear laser for manual material positioning under the saw blade



Vertical clamping unit for reliable clamping of material layers



Automatic bandsawing machine going gets tough

HBM series: Makes short work of any material

Aluminium, NF metals, materials with difficult cutting properties – the HBM series cuts practically anything down to size. With even greater simplicity, greater precision and, most importantly, higher speed. The HBM makes light work of even the highest chip volumes. You too can benefit from the efficiency and flexibility of these outstanding high-performance bandsaws.

Top performance as standard

Opting for BEHRINGER means investing in only the very best: Concentrated expertise, highly flexible system engineering and a whole range of interesting details as standard:

- Frequency controlled drive system for infinitely variable cutting speeds
- Automatic guide arm adjusting with hydraulic blade clamping
- Complete carbide capability
- Fully hydraulic saw blade tensioning
- Minimal remnant pieces
- Extremely short cycle times
- Generously dimensioned chip conveyor
- CNC program control for variable piece number and length combinations

A matured range of accessories

This machine range is also available in a variety of models with scope for flexible upgrading. Precisely in line with your specifications. For even greater convenience, reliability and precision. For example

- Servo saw feed drive system
- Bundle clamping unit
- Band slip monitoring



machines when the

BEHRINGER HBM 440A



Double wheel bearing with centrally positioned blade tensioning cylinder



Good accessibility, simple saw blade exchange



Material gripper 1500 mm / 3000 mm (optional)

All precisely under control

Hightech made easy

For every saw and every requirement profile, BEHRINGER offers its own internally developed and precisely tailored control system. Freely programmable and ideal for several different piece number and length combinations. Which means absolute control at your fingertips.

Other bonuses

- Absolute operating simplicity
- Ergonomically designed operating terminals
- Ultra-modern display technology
- Clearly arranged menu prompting

Always up to date

Using our own internally developed software for simple, precise band-saw programming means you can rest assured in the knowledge that you are benefiting from BEHRINGER's extensive process optimization expertise. The result: an easily learned, simple operating system accessible to everyone. And an optional update service which keeps you permanently abreast of any upgrades and improvements.

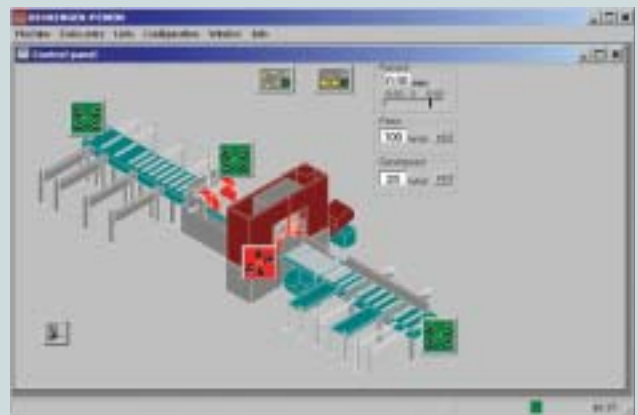


The BEHRINGER control system not only simplifies even the most complex processes for the user, it also offers the benefits of remote diagnostics and maintenance, as well as importing job data.

ol



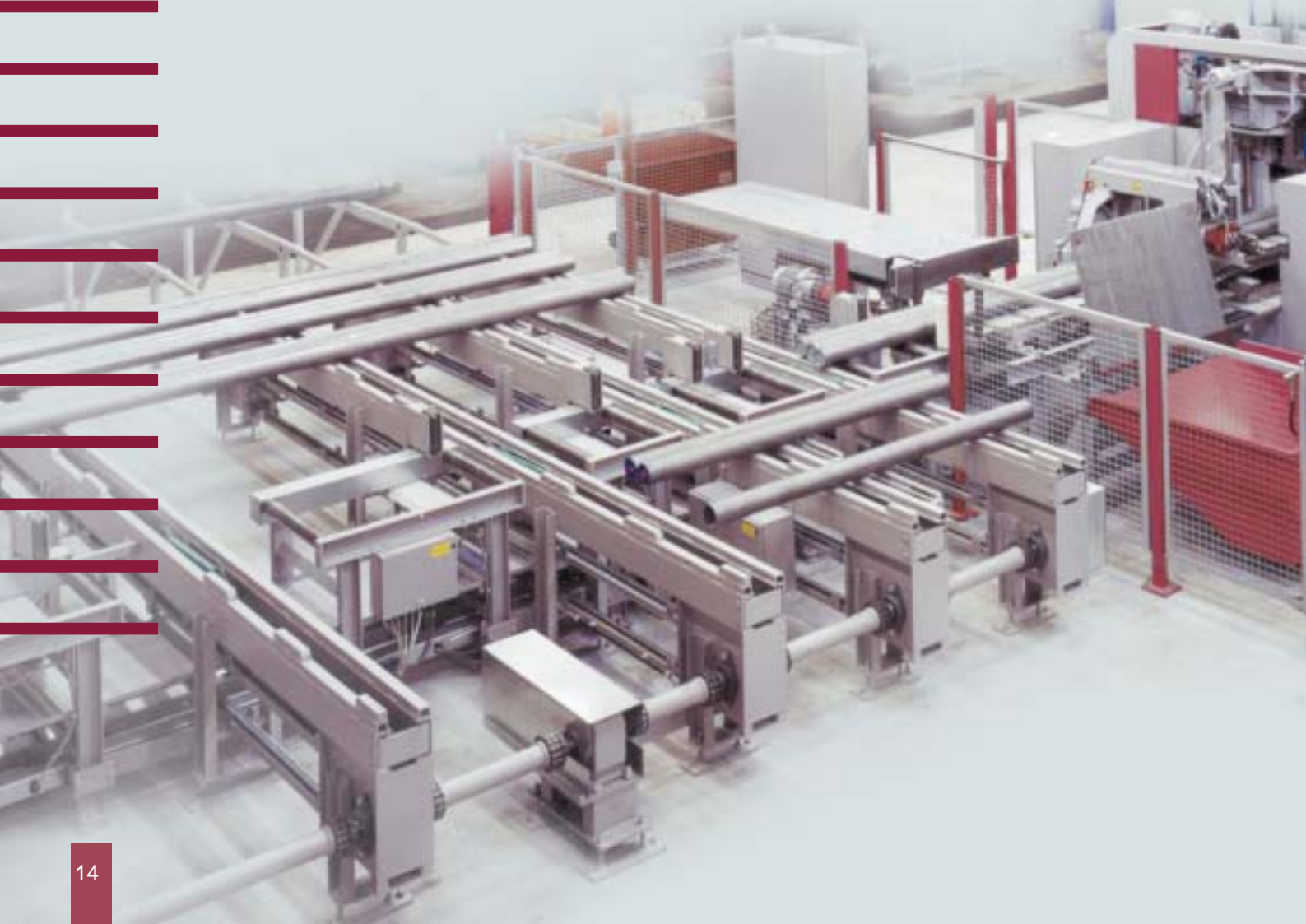
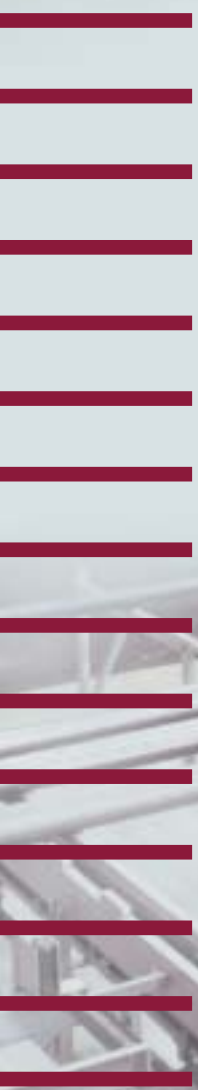
Optional with PC-control:



A clearly understandable menu prompting system makes child's play of controlling both the bandsaw and peripheral equipment.



All from a single



e source: from BEHRINGER!

Process reliability the systematic way

Let us help you make the very best of your production: In our role as a leading problem solver and system supplier we have a range of innovative solutions to offer. To ensure that your machine outfit is working to its maximum potential, we can provide

you with a complete plant concept: featuring individual infeed, transfer and transport solutions designed to work in perfect harmony. In short: The whole range of peripheral equipment encompassing user-friendly hardware and intelligent software programs to match. For optimum operating sequences, maximum process reliability and a consistently high standard of quality in everything you produce.

● **A modular concept for outstanding flexibility**

Every BEHRINGER product is designed on a modular basis. Which means you get the best possible sawing concept to meet your individual needs: Meticulously engineered, efficient and future oriented right from the start. From the first advisory meeting through project processing, design, installation, integration and commissioning to financing, training and reliable after-sales services – all tailored to your needs from a single, reliable source.

● **Future-proof investment**

To opt for BEHRINGER is a secure investment in your future. Because we use nothing but the very best components and materials. And because the quality and durability of every one of our machines is assured through the very latest production methods and exhaustive testing in our own laboratories.

● **Always in the very best hands**

You can look forward with confidence to the future with the solid assurance of a BEHRINGER machine behind you. And that applies to every price category. Because BEHRINGER stands for investment in top quality engineering, durability, innovation and compatibility. And should you ever need the occasional spare part – you can rely on their availability for decades to come. Around the world.



Technical data

Model	HBP 263	HBP 313
Cutting range 90° round (inch)	10.2	12.2
90° flat (W x H) (inch)	11.8x10.2	19.6x11.8
90° square (W x H) (inch)	-	-
75° mitre left dia. / flat (W x H) (inch)	-	-
60° mitre left dia. / flat (W x H) (inch)	-	-
45° mitre left dia. / flat (W x H) (inch)	-	-
Working height (inch)	31.5	31.5
Single stroke of the feeding gripper (inch)	-	-
Drive motor (H.P.) – frequency controlled	5.4	5.4
Cutting speed (FPM)	65-459	65-459
Saw blade dimensions	15'3"x1-1/4"x.042"	16'5"x1-1/4"x.042"
Weight (lbs)	2,860	3,520
Space requirement (inch)	98x51	106x51.1

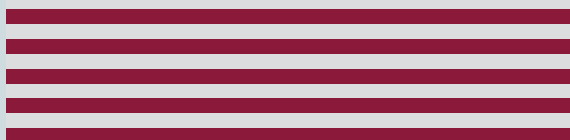
Model	HBP 313A	HBP 313AG	HBP 413A
Cutting range 90° round (inch)	12.2	12.2	16.1
90° flat (W x H) (inch)	19.7x11.8	15.7x12.2	19.7x15.7
90° square (W x H) (inch)	11.8x11.8	12.2x12.2	15.7x15.7
75° mitre left dia. / flat (W x H) (inch)	-	-	-
60° mitre left dia. / flat (W x H) (inch)	-	-	-
45° mitre left dia. / flat (W x H) (inch)	-	15.7x12.2	-
Working height (inch)	31.5	31.5	31.5
Single stroke of the feeding gripper (inch)	15.7	15.7	15.7
Drive motor (H.P.) – frequency controlled	5.4	5.4	5.4
Cutting speed (FPM)	65-459	65-459	65-459
Saw blade dimensions	16'5"x1-1/4"x.042"	16'5"x1-1/4"x.042"	19'0"x1-1/2"x.050"
Weight (lbs)	4,840	5,060	5,170
Space requirement (inch)	106x75	110x86	116x77

HBP 413	HBP 513	HBP 263A	HBP 263AG
16.1	20.1	10.2	10.2
19.6x15.7	19.6x19.6	11.8x10.2	11.8x10.2
-	-	10.2x10.2	10.2x10.2
-	-	-	-
-	-	-	-
-	-	-	10.2x10.2
31.5	31.5	31.5	31.5
-	-	15.7	15.7
5.5	7.4	5.4	5.4
65-459	65-459	65-459	65-459
19'0"x1-1/2"x.050"	21'0"x2"x.050"	15'3"x1-1/4"x.042"	15'3"x1-1/4"x.042"
4,180	5,060	3,960	4,400
116x53	124x53	98x74	98x86

HBP 513A	HBM 370A	HBM 440A	HBM 540A
20.0	14.5	17.3	21.2
19.6x19.6	17.3x14.5	17.3x17.3	24.8x21.2
19.6x19.6	14.5x14.5	17.3x17.3	21.2x21.2
-	-	-	-
-	-	-	-
-	-	-	-
31.5	31.5	31.5	31.5
29.5	23.6	15.7	19.6
7.4	7.4	7.4	10.0
65-459	42-426	65-459	65-459
21'0"x2"x.050"	21'7"x1-1/2"x.050"	22'0"x2"x.050"	24'8"x2"x.063"
6,600	9,680	10,120	11,220
124x92	104x177	104x177	104x177

Subject to technical modifications

BEHRINGER



Behringer GmbH
Maschinenfabrik und Eisengießerei
Postfach 11 53
D-74910 Kirchartt
Industriestraße 23
D-74912 Kirchartt
Telefon +49 (72 66) 2 07-0
Telefax+49 (72 66) 2 07-5 00
info@behringer.net
www.behringer.net

Behringer France
13 rue de la Brot
ZAE Cap Nord
BP 57523
F-21075 Dijon cedex
Téléphone +33 3.80.78.72.62
Téléfax +33 3.80.78.72.60
BEHRINGER_FRANCE@wanadoo.fr

Behringer Saws, Inc.
Morgantown Business Park
721 Hemlock Road
Morgantown, PA 19543
USA
Telephone +1 610/2 86 97 77
Telefax +1 610/2 86 96 99
Toll free 1-888-Behringer
info@usa.behringer.net